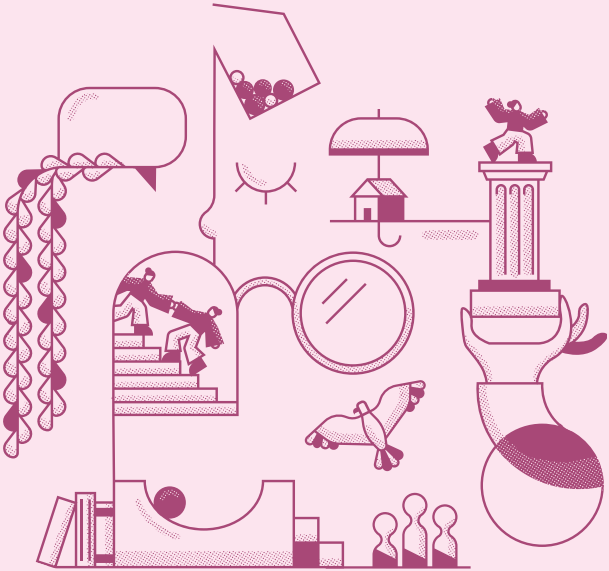




# WOMEN'S LEGAL CENTRE ACT



# STRONGER. SAFER. BETTER.

Improving lives through  
legal representation,  
support & advocacy.

# HOW TO GET HELP

We're here to support you. Call us and one of our Client Services Team will go through your situation and see how we can help.

## INTAKE & ADVICE LINE

Open 9am to 5pm, Monday to Friday

**02 6257 4377**  
**1800 634 669**

## WHAT WE DO

We can provide information about legal processes and legal advice to help you take the next step in resolving your legal issue.

We can also represent you in negotiations, mediations and in courts/tribunals to resolve your matter.

## HOW WE WORK

Our lawyers work with a team of social workers and an Aboriginal Case Manager to support you in a range of areas and help you resolve your legal matter.

We can help you with safety planning, engaging with other services and advocate to support your access to entitlements.

We offer an accessible and flexible service — talk to us about what you'll need to be able to access our services.



## **WE ARE A SPECIALIST LEGAL SERVICE FOR WOMEN IN THE ACT**

We can help with:

- Divorce and separation
- Arrangements for children and division of property following separation
- Domestic and family violence
- Engaging with Child Protection
- Problems at work
- Discrimination
- Financial assistance for victims of crime

We understand you might need more than legal advice to take the next step, so we also have a team of Social Workers and an Aboriginal Case Manager to support you.

**OUR SERVICES ARE FREE**

# OUR SERVICES

## FAMILY LAW

We provide advice and assistance in relation to divorce and separation, children and property.

We have an expert understanding of how domestic and family violence affects women's circumstances and legal matters.

We support women to secure safe arrangements for the care of children and the fair division of assets and liabilities following separation.

We also help women who are considering separation to understand legal processes and their entitlements.

## CARE & PROTECTION

We help women in the early stages of Care and Protection Services' involvement with their families.

We provide legal advice and assistance, so that women understand the process and their rights to ensure processes are fair and transparent.

We aim to support better decisions and keep children connected to their families or kin where possible.

## EMPLOYMENT & DISCRIMINATION

We help women enforce their rights and entitlements at work, including access to maternity leave, flexible work arrangements and the right to be free from discrimination and sexual harassment.

We can also help women who have been treated unfairly at work, at school, or by a service provider because of a protected characteristic including sex, race, disability, sexual orientation or age.

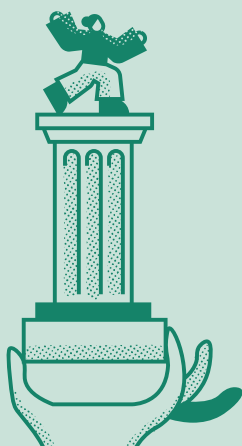
---

## MULLEUN MURA ACCESS TO JUSTICE

Mulleun Mura is a specialist program that supports Aboriginal and Torres Strait Islander women going through separation or family breakdown, women who need help engaging with Care and Protection, including mothers, aunts and other carers, and women affected by domestic and family violence.

We aim to strengthen Aboriginal and Torres Strait Islander culture and communities by supporting women and families to stay connected and safe.

Get in touch – we will yarn with you to work out what you need to reach your goals.



### NEED MORE INFO?

Our website includes more information on what we do and how to get help, as well as information and resources on legal issues affecting women.

[wlc.org.au](http://wlc.org.au)

# GET HELP FOR YOUR CLIENTS

## MAKE A REFERRAL

Referring agencies can use the online referral form on our website to refer clients for assistance.

Our Client Services Team will contact women directly to discuss their legal needs and how we can assist. We will also get back to referring agencies directly to let them know we contacted their client.



**The Centre acknowledges the traditional custodians of the lands on which we work. We recognise this land was never ceded.**

We pay our respects to elders past and present, and to Aboriginal and Torres Strait Islander children and future leaders, for they hold the memories, the traditions, the culture and the hopes of First Nations people.



GPO Box 1726  
Canberra City ACT 2601

**P** 02 6257 4377  
**E** [admin@wlc.org.au](mailto:admin@wlc.org.au)

[wlc.org.au](http://wlc.org.au)

---